

Eden Research Laboratory

To: Rowmark

Date: October 7, 2025

From: Thomas Poth

Number of pages including cover: 2

Regarding: ASTM D5511 Study Samples (306 days)

# Update

2412 Princeton NE, Suite E

Albuquerque, NM 87107

T 505.508.3994

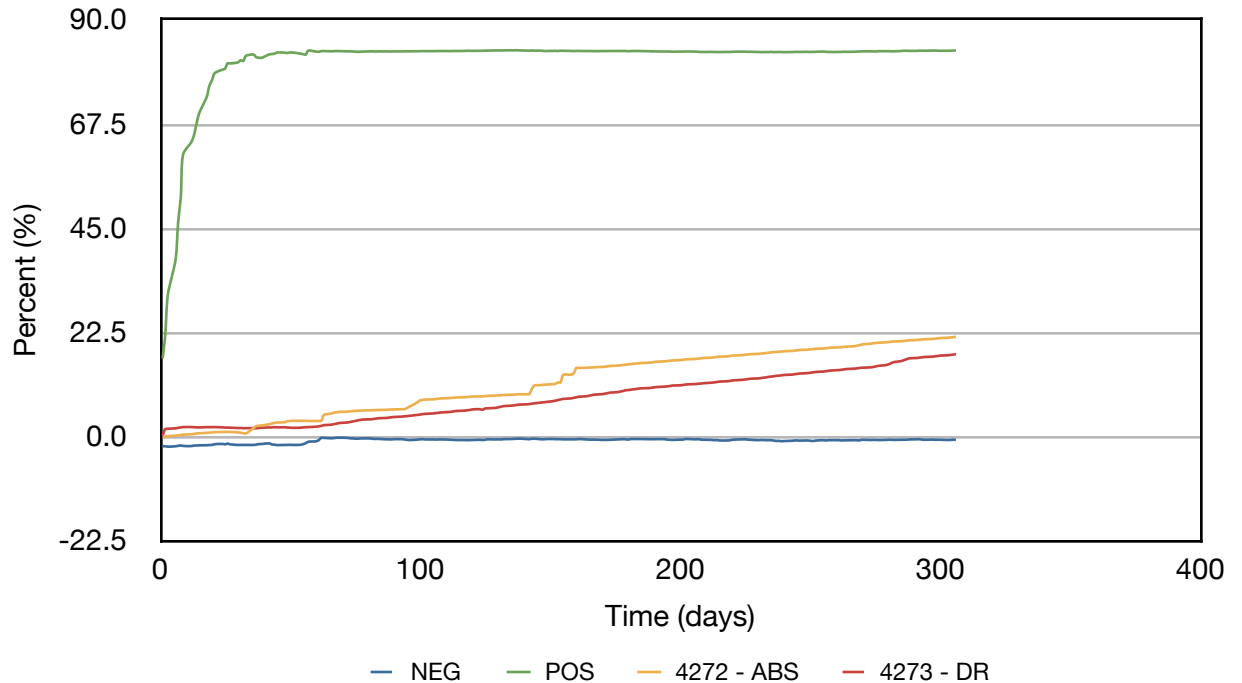
M 505.550.9316

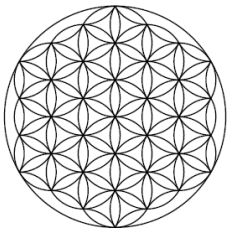
thomas.poth@edenresearchlab.com

	Inoculum	Negative	Positive	4272 - ABS	4273 - DR
Cumulative Gas Volume (mL)	2380.0	2344.5	10905.0	10226.4	7884.9
Percent CH <sub>4</sub> (%)	43.7	42.6	31.5	51.0	47.9
Volume CH <sub>4</sub> (mL)	1040.5	997.6	3431.2	5220.3	3778.6
Mass CH <sub>4</sub> (g)	0.74	0.71	2.45	3.73	2.70
Percent CO <sub>2</sub> (%)	40.2	37.8	47.1	37.6	37.7
Volume CO <sub>2</sub> (mL)	957.3	885.6	5135.6	3848.8	2970.9
Mass CO <sub>2</sub> (g)	1.88	1.74	10.09	7.56	5.84
Sample Mass (g)	10	10	10	20.0	20.0
Theoretical Sample Mass (g)	0.0	8.6	4.2	17.6	14.3
Biodegraded Mass (g)	1.07	1.01	4.59	4.86	3.62
Percent Biodegraded (%)		-0.7	83.4	21.6	17.8
* Adjusted Percent Biodegraded (%)		-0.9	100.0	25.9	21.4

\* Outside of the ASTM D5511 method and on the assumption that the positive control (Cellulose) will fully biodegrade, all value have been proportionally adjusted.

## Biodegradation





Eden Research Laboratory

# Update

2412 Princeton NE, Suite E  
Albuquerque, NM 87107  
T 505.508.3994  
M 505.550.9316

thomas.poth@edenresearchlab.com

## Biodegradation

