

Sublimation Troubleshooting

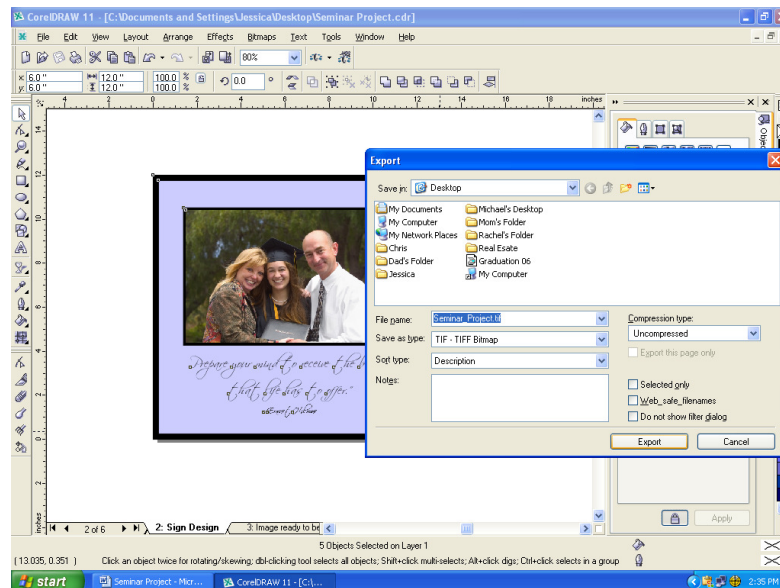
Sublimation Printing – Quick Tip for Faster Spooling Times

1. Scan desired image into the computer.
2. Import image into CorelDraw.
3. Design Sign/Project

There are 2 options on how to reproduce the image: Sublimation or Laser Engrave.

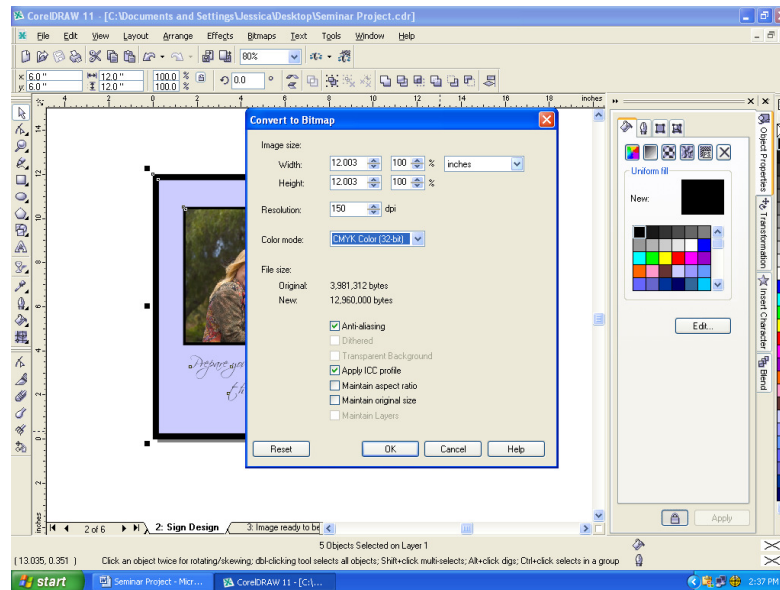
Images typically cannot be Rotary Engraved:

If Sublimation is chosen, design your project accordingly, always allowing room for bleeding. To then speed-up the printing process, export the entire project as a .jpg. This will compact the entire image, minimizing the spooling time to the printer without sacrificing print quality.



4. Export the image to a location that you can locate it easily.

Sublimation Printing – Quick Tip for Faster Spooling Times



5. Next, return to Corel Draw and import the exported image.

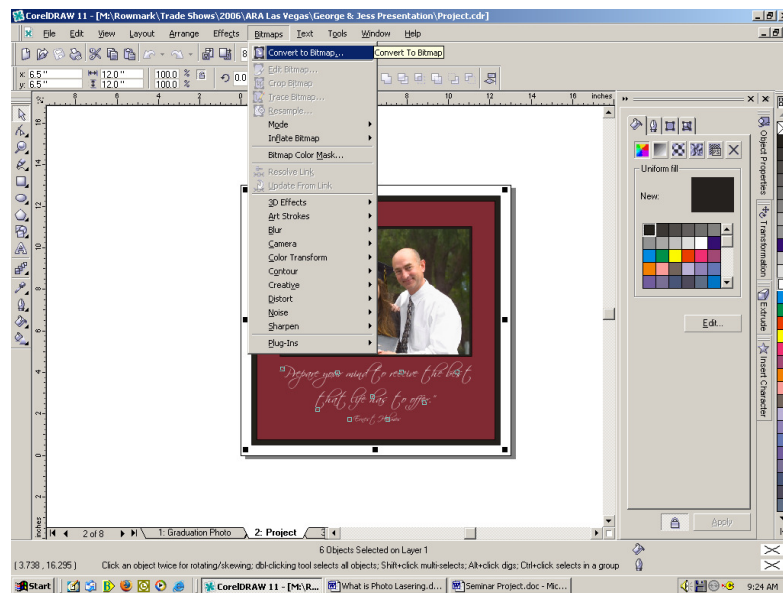
6. The project is now ready to be printed. (Tip: Always save before exporting your project. Once a project has been exported and then imported in as a .tiff, it is no longer editable.)

Another method for this same process:

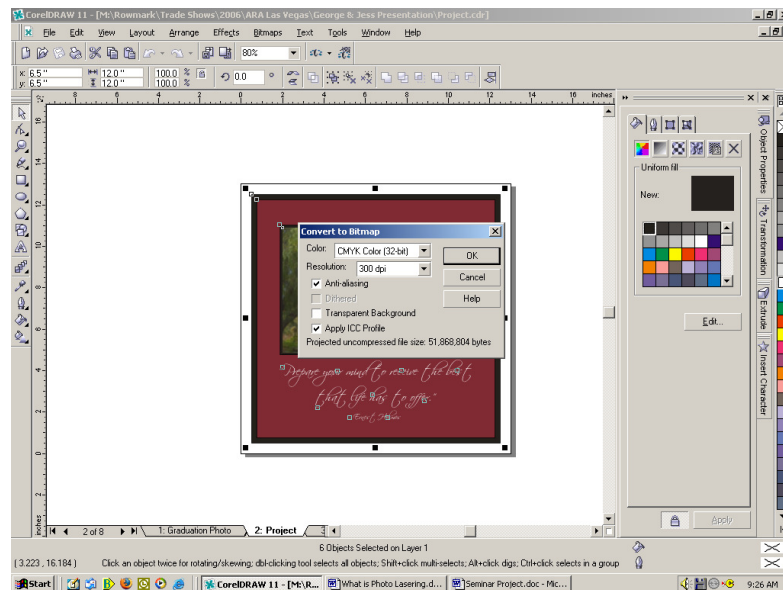
- Select the entire image. Select “Bitmaps” from the top menu and select “convert to Bitmap.”

Sublimation Troubleshooting

Sublimation Printing – Quick Tip for Faster Spooling Times



- A Convert to Bitmap window will open. Select Color as CMYK Color (32 – Bit).



Sublimation Printing – Quick Tip for Faster Spooling Times

- Resolution: 300 dpi.
- In that same window, check mark “Anti-aliasing” and “Apply ICC Profile.”
- Once “OK” has been selected, the .cdr file is converted to a .jpg.
- Please note: If this method is used to compress the .cdr file, the file cannot be edited. Please save the project before converting the file. Once the file has been converted, please do a “Save As” in order to keep the .cdr file intact and editable.

If you have further questions, please contact:

*Jessica Heldman-Beck
Rowmark, LLC
Brand Marketing Manager
jheldman@rowmark.com*